
FENWICK SOLAR FARM

**Fenwick Solar Farm
EN010152**

Framework Construction Traffic Management Plan

Part 2 of 2

Document Reference: EN010152/APP/7.17

Regulation 5(2)(a)

Infrastructure Planning (Applications: Prescribed Forms and Procedure)
Regulations 2009

~~October~~December 2024
Revision Number: ~~000~~001

Revision History

Revision Number	Date	Details
00	October 2024	DCO application
01	December 2024	S51 Response

Prepared for:
Fenwick Solar Project Limited

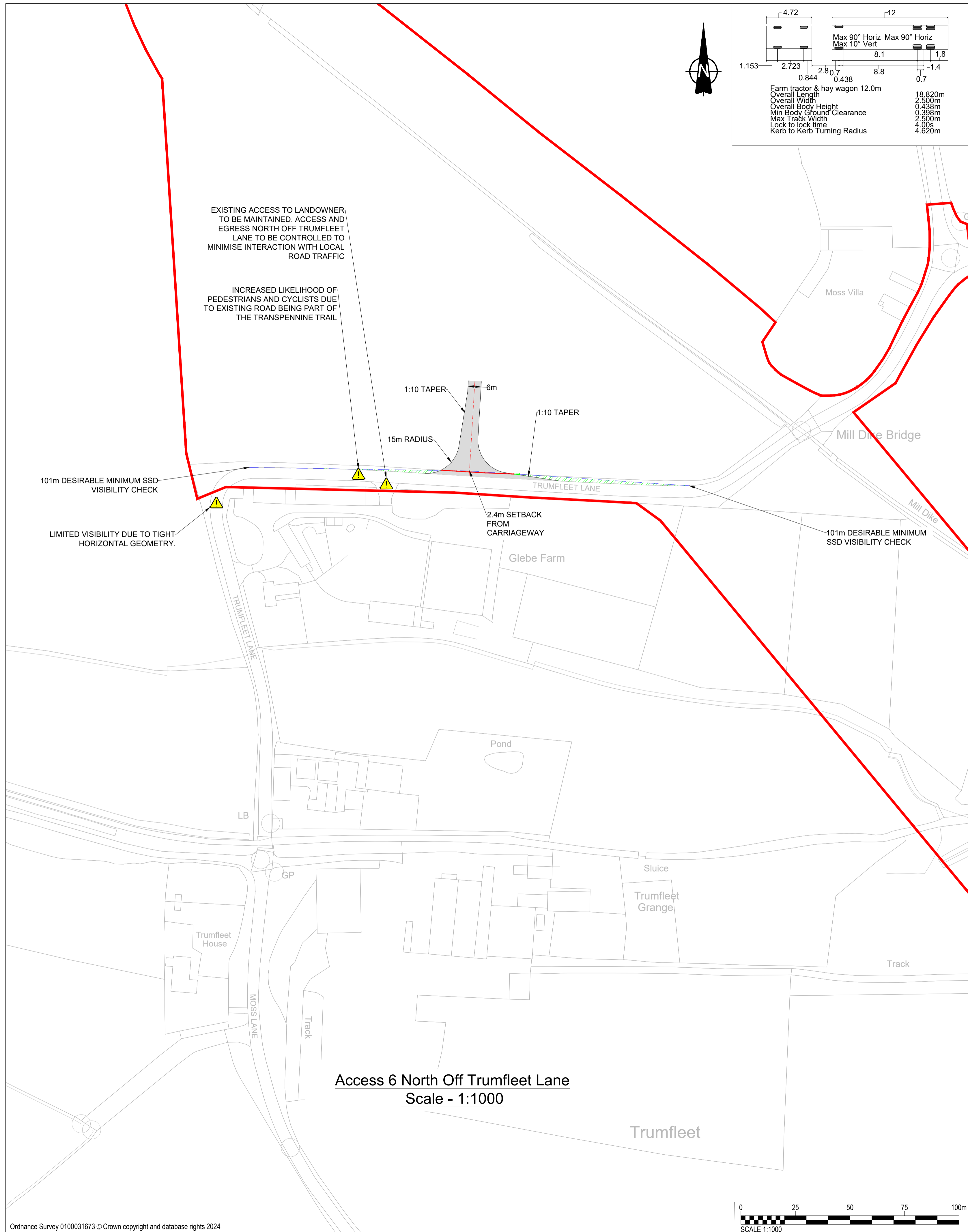
Prepared by:
AECOM Limited

© 2024 AECOM Limited. All Rights Reserved.

This document has been prepared by AECOM Limited (“AECOM”) for sole use of our client (the “Client”) in accordance with generally accepted consultancy principles, the budget for fees and the terms of reference agreed between AECOM and the Client. Any information provided by third parties and referred to herein has not been checked or verified by AECOM, unless otherwise expressly stated in the document. No third party may rely upon this document without the prior and express written agreement of AECOM.

Annex A Proposed Access Layouts, Visibility Splays and Swept Paths

Access 6 to 13



4.72	12
1.153	2.723
0.844	2.807
0.438	8.8
0.7	1.4
1.8	
8.1	
Max 90° Horiz	Max 90° Horiz
Max 10° Vert	Max 10° Vert
Farm tractor & hay wagon 12.0m	18.820m
Overall Length	2.500m
Overall Width	0.438m
Overall Body Height	0.398m
Min Body Ground Clearance	2.500m
Max Track Width	4.00s
Lock to lock time	4.620m
Kerb to Kerb Turning Radius	



PROJECT

Fenwick Solar Farm

CLIENT

Fenwick Solar Project Limited

CONSULTANT

AECOM
 Saxon House, 27 Duke Street
 Chelmsford, Essex, CM1 1HT
 01245 771200 tel 01245 476121 fax
 www.aecom.com

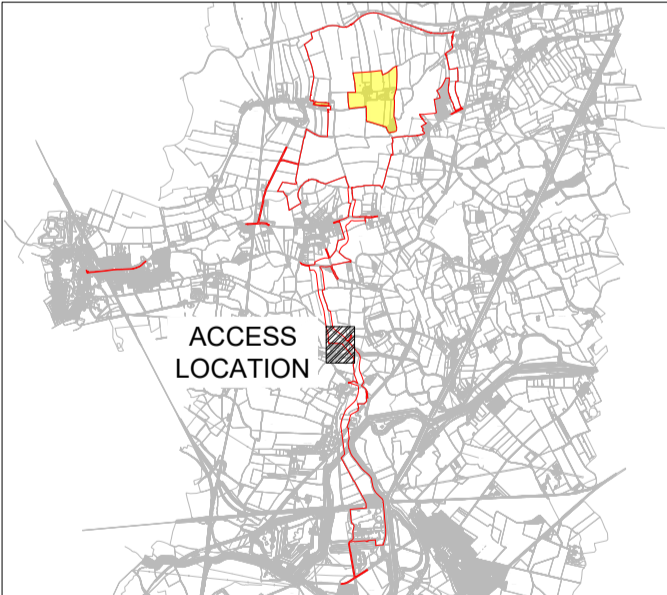
GENERAL NOTES

1. This drawing is to be read in conjunction with all other relevant documentation.
2. Do not scale from this drawing, use only printed dimensions.
3. All dimensions in metres, all chainages, levels and coordinates are in meters unless defined otherwise.
4. This Drawing is to be read in conjunction with the project health & Safety File for any identified potential risks.
5. Vegetation to be removed denotes any vegetation features (such as hedgerows) that need to be removed to provide the required junction visibility. Any verge grassland is not to be removed but managed by the relevant maintainer to a low height so as to not impact upon junction visibility.
6. Junction visibility for the access is based upon visibility parameters derived using 85th percentile speed survey received on the 20th March 2024.

KEY

- Extent of Access Footprint
- Order limits
- Existing Public Rights of Way
- Vehicle body
- Vehicle body path
- Vehicle load
- Vehicle load path
- Vehicle wheels path
- Edge of road
- Land not included in the Order Limits
- Junction Visibility
- Vegetation Management for Vis splay
- Hedgerow Removal for Vis Splay
- Hedgerow Removal for Bellmouth Access

SHEET PLAN



ISSUE/REVISION

NO	DATE	DESCRIPTION
P03	04/12/2024	Update for PINS Comments
P02	11/10/2024	DCO Issue
P01	02/05/2024	FIRST VERSION
I/R	DATE	DESCRIPTION

PROJECT NUMBER

60698207

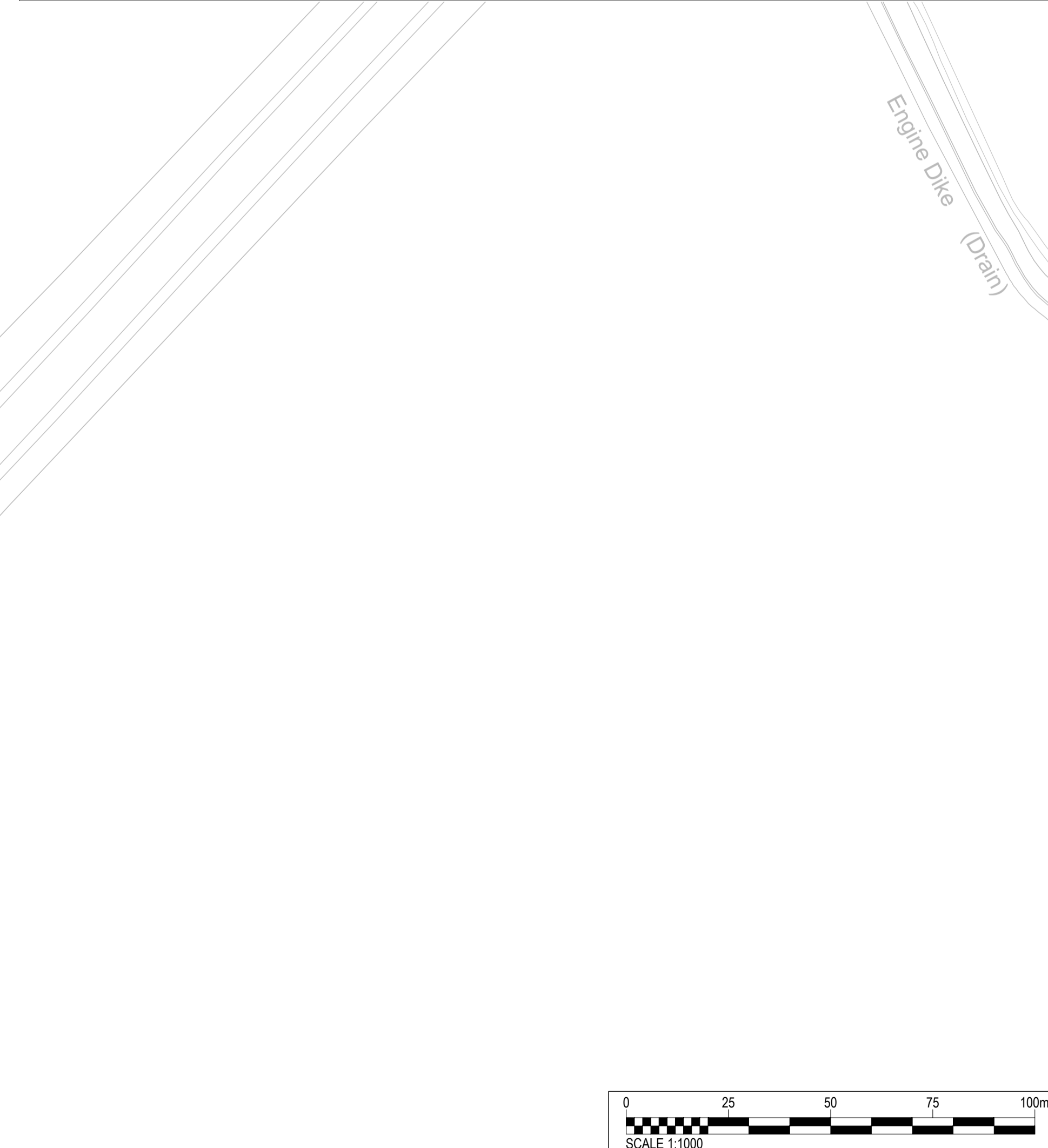
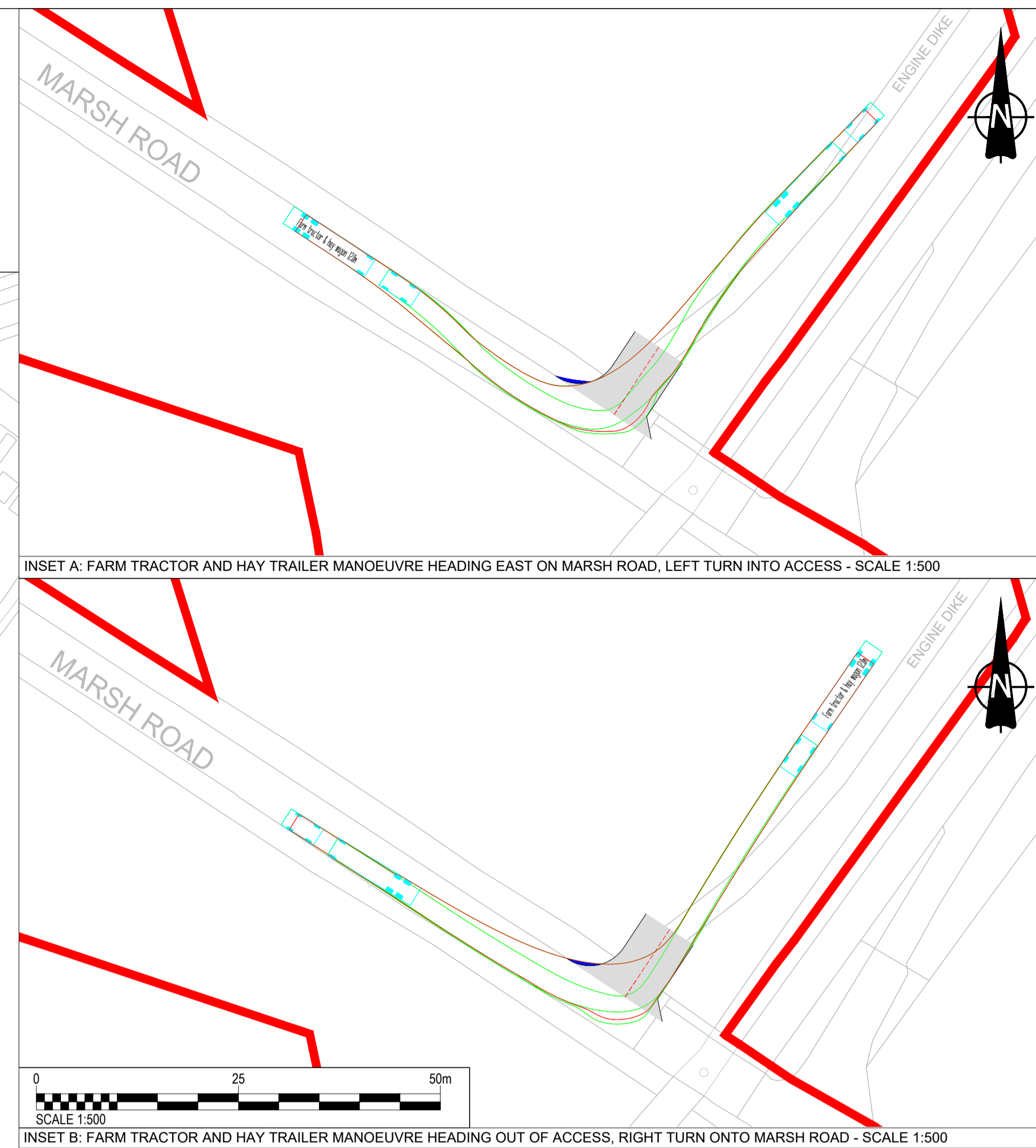
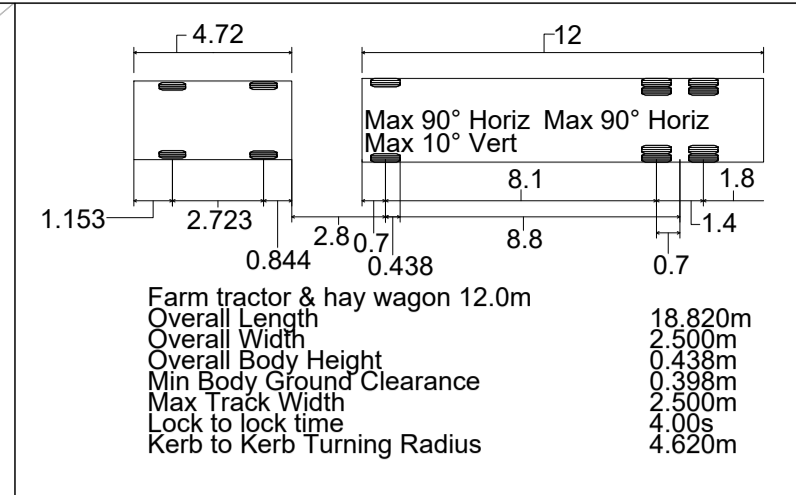
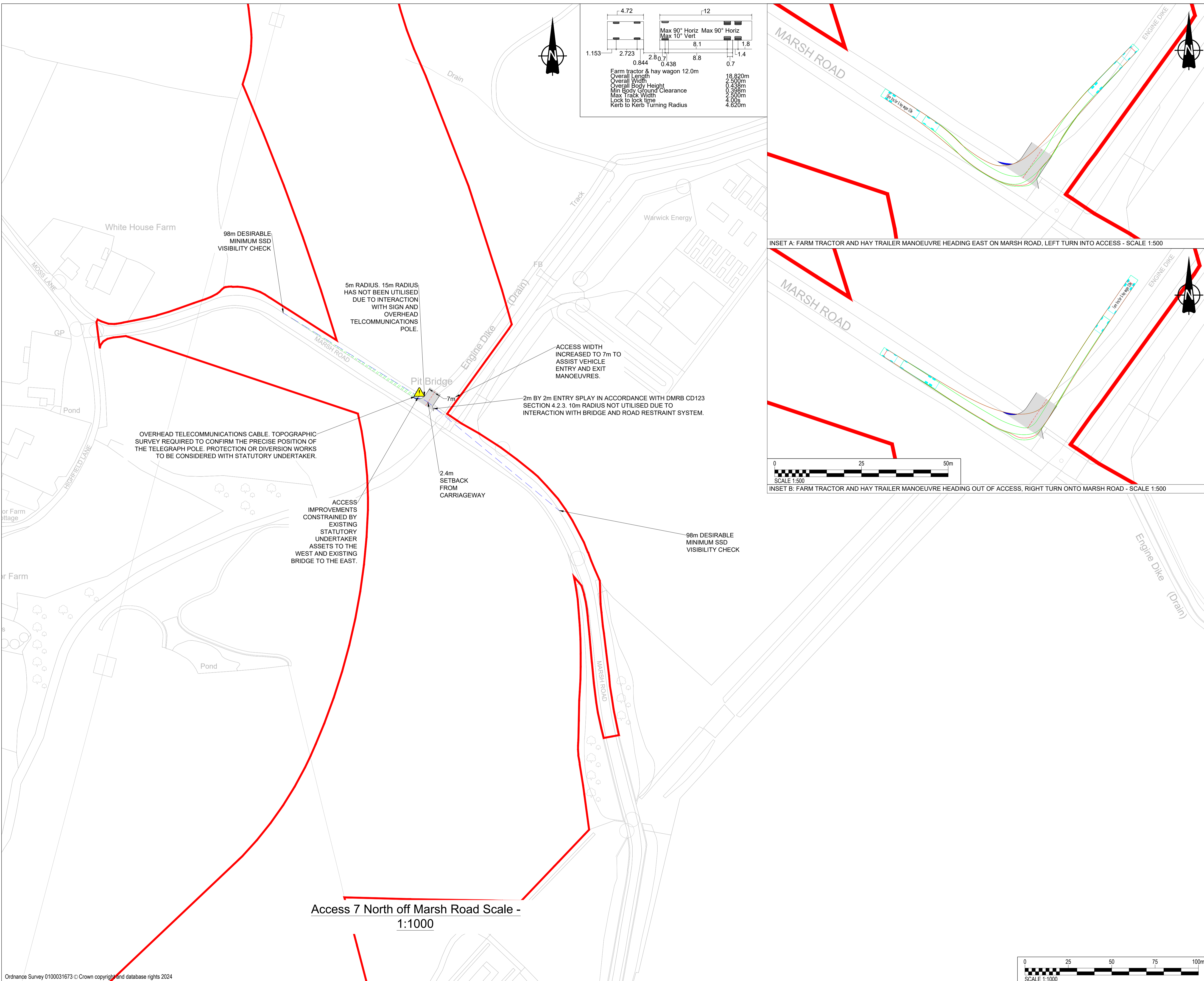
SHEET TITLE

ACCESS 6 NORTH OFF TRUMFLEET LANE LAYOUT AND SWEEP PATH ANALYSIS

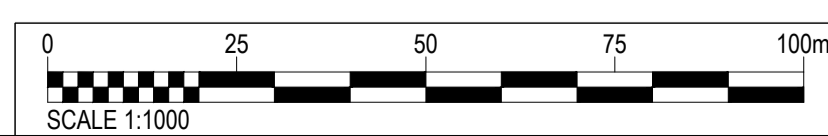
SHEET NUMBER

60698207-ACM-HGN-00-DR-CE-1006

This drawing has been prepared for the use of AECOM's client. It may not be used, modified, reproduced or relied upon by third parties, except as agreed by AECOM or as required by law. AECOM accepts no responsibility, and denies any liability whatsoever, to any party that uses or relies on this drawing without AECOM's express written consent. Do not scale this document.

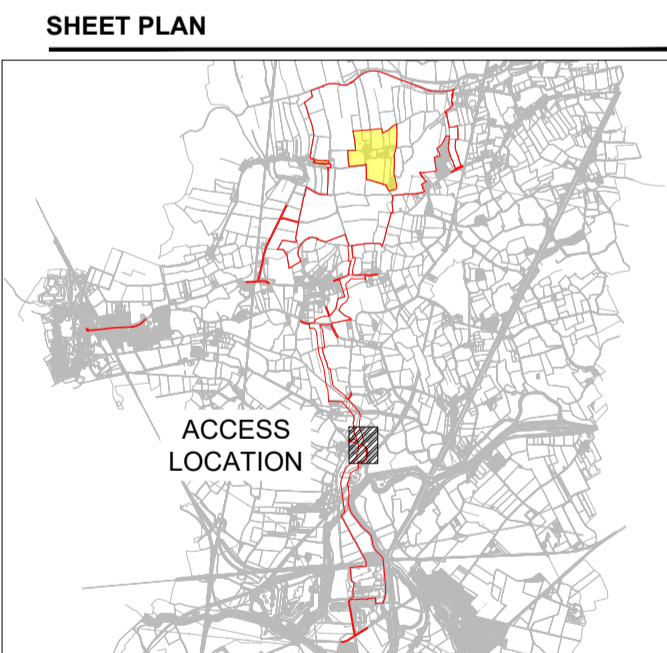


Access 7 North off Marsh Road Scale - 1:1000



- GENERAL NOTES**
- This drawing is to be read in conjunction with all other relevant documentation. Do not scale from this drawing, use only printed dimensions.
 - All dimensions in meters, all chainages, levels and coordinates are in meters unless defined otherwise.
 - This Drawing is to be read in conjunction with the project health & Safety File for any identified potential risks.
 - Vegetation to be removed denotes any vegetation features (such as hedgerows) that need to be removed to provide the required junction visibility. Any verge grassland is not to be removed but managed by the relevant maintainer to a low height so as to not impact upon junction visibility.
 - Junction visibility for the access is based upon visibility parameters derived using 85th percentile speed survey received on the 20th March 2024.

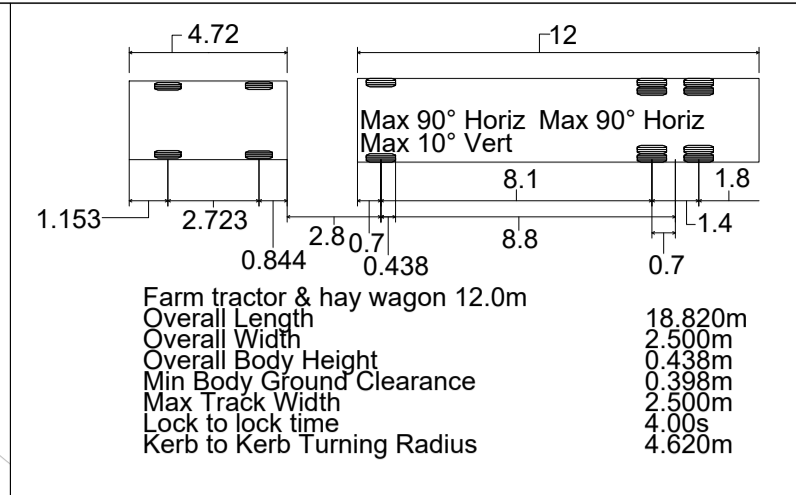
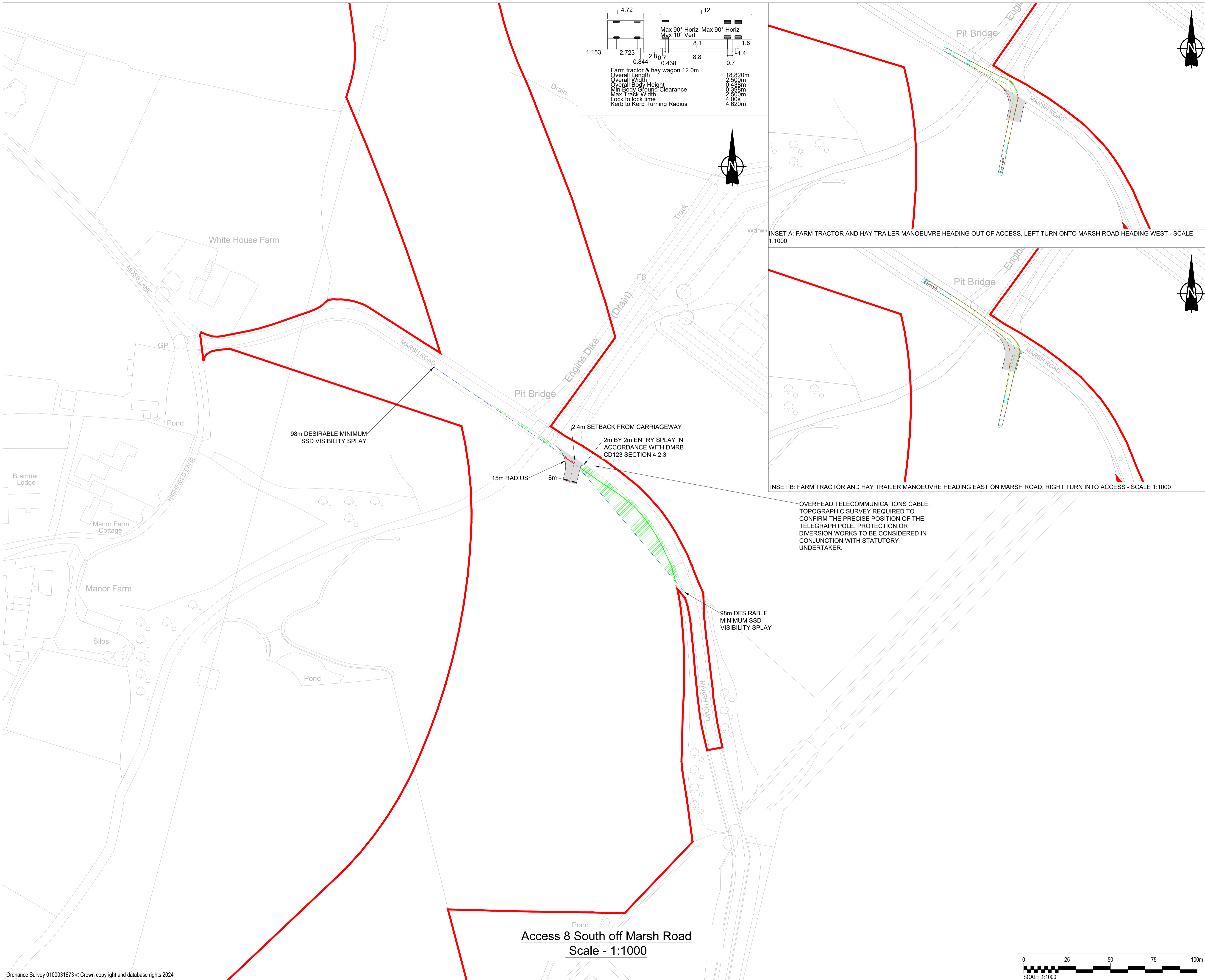
- KEY**
- Extent of Access Footprint
 - Order limits
 - Existing Public Rights of Way
 - Vehicle body
 - Vehicle body path
 - Vehicle load
 - Vehicle load path
 - Vehicle wheels path
 - Edge of road
 - Land not included in the Order Limits
 - Junction Visibility
 - Vegetation Management for Vis splay
 - Hedgerow Removal for Vis Splay
 - Hedgerow Removal for Bellmouth Access
 - Verge Protection Mats



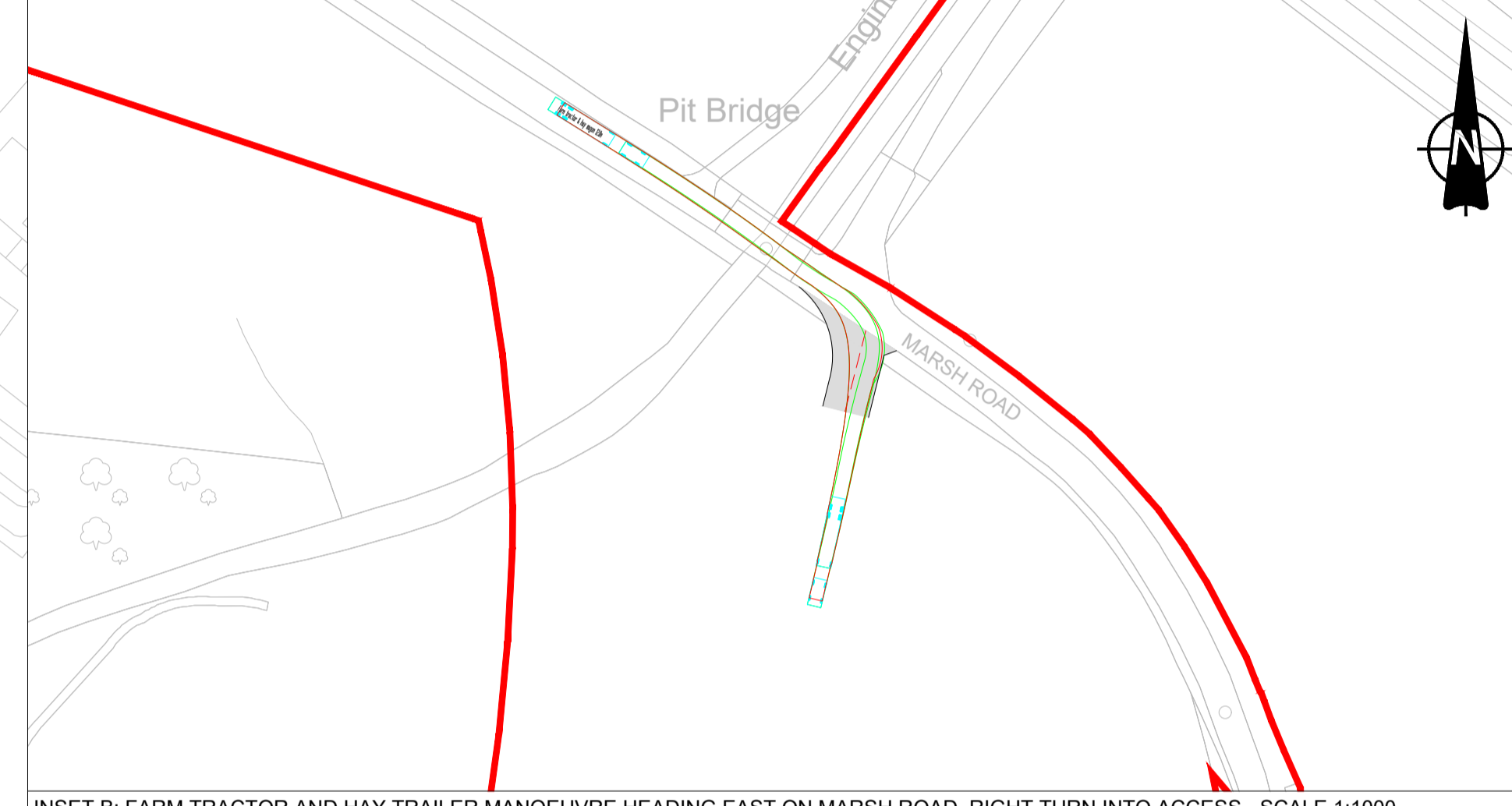
ISSUE/REVISION

NO	DATE	DESCRIPTION
P03	04/12/2024	Update for PINS Comments
P02	11/10/2024	DCO Issue
P01	4/06/2024	FIRST VERSION
I/R	DATE	DESCRIPTION

This drawing has been prepared for the use of AECOM's client. It may not be used, modified, reproduced or relied upon by third parties, except as agreed by AECOM or as required by law. AECOM accepts no responsibility, and denies any liability whatsoever, to any party that uses or relies on this drawing without AECOM's express written consent. Do not scale this document.



INSET A: FARM TRACTOR AND HAY TRAILER MANOEUVRE HEADING OUT OF ACCESS, LEFT TURN ONTO MARSH ROAD HEADING WEST - SCALE 1:1000

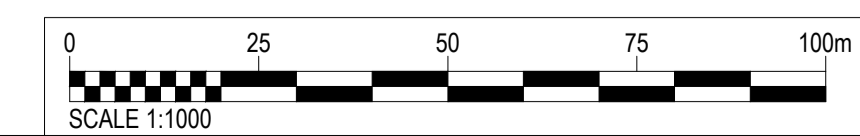


INSET B: FARM TRACTOR AND HAY TRAILER MANOEUVRE HEADING EAST ON MARSH ROAD, RIGHT TURN INTO ACCESS - SCALE 1:1000



OVERHEAD TELECOMMUNICATIONS CABLE. TOPOGRAPHIC SURVEY REQUIRED TO CONFIRM THE PRECISE POSITION OF THE TELEGRAPH POLE. PROTECTION OR DIVERSION WORKS TO BE CONSIDERED IN CONJUNCTION WITH STATUTORY UNDERTAKER.

Access 8 South off Marsh Road
Scale - 1:1000



PROJECT

Fenwick Solar Farm

CLIENT

Fenwick Solar Project Limited

CONSULTANT

AECOM
Saxon House, 27 Duke Street
Chelmsford, Essex, CM1 1HT
01245 771200 tel 01245 476121 fax
www.aecom.com

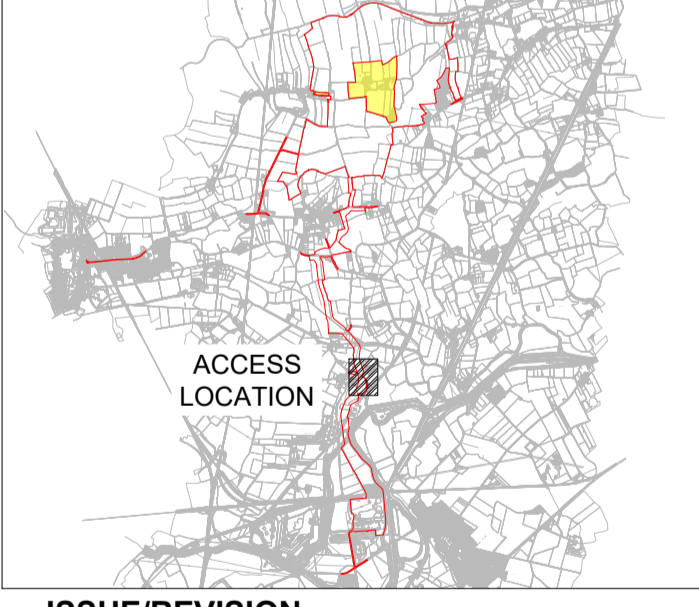
GENERAL NOTES

1. This drawing is to be read in conjunction with all other relevant documentation.
2. Do not scale from this drawing, use only printed dimensions.
3. All dimensions in meters, all chainages, levels and coordinates are in meters unless defined otherwise
4. This Drawing is to be read in conjunction with the project health & Safety File for any identified potential risks.
5. Vegetation to be removed denotes any vegetation features (such as hedgerows) that need to be removed to provide the required junction visibility. Any verge grassland is not to be removed but managed by the relevant maintainer to a low height so as to not impact upon junction visibility.
6. Junction visibility for the access is based upon visibility parameters derived using 85th percentile speed survey received on the 20th March 2024.

KEY

- Extent of Access Footprint
- Order limits
- Existing Public Rights of Way
- Vehicle body
- Vehicle body path
- Vehicle load
- Vehicle load path
- Vehicle wheels path
- Edge of road
- Land not included in the Order Limits
- Junction Visibility
- Vegetation Management for Vis splay
- Hedgerow Removal for Vis Splay
- Hedgerow Removal for Bellmouth Access

SHEET PLAN



ISSUE/REVISION

NO	DATE	DESCRIPTION
P03	04/12/2024	Update for PINS Comments
P02	11/10/2024	DCO Issue
P01	02/05/2024	FIRST VERSION
I/R	DATE	DESCRIPTION

PROJECT NUMBER

60698207

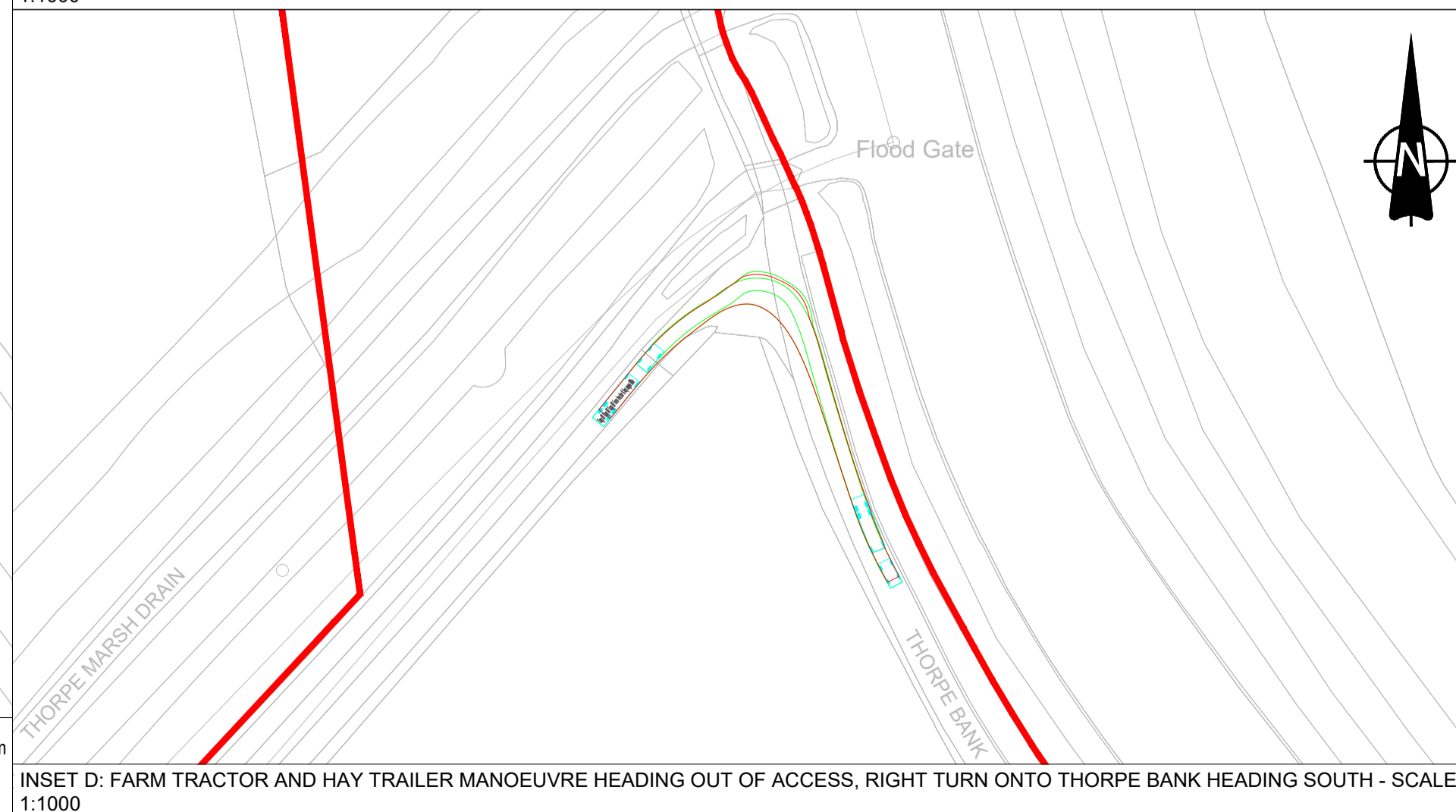
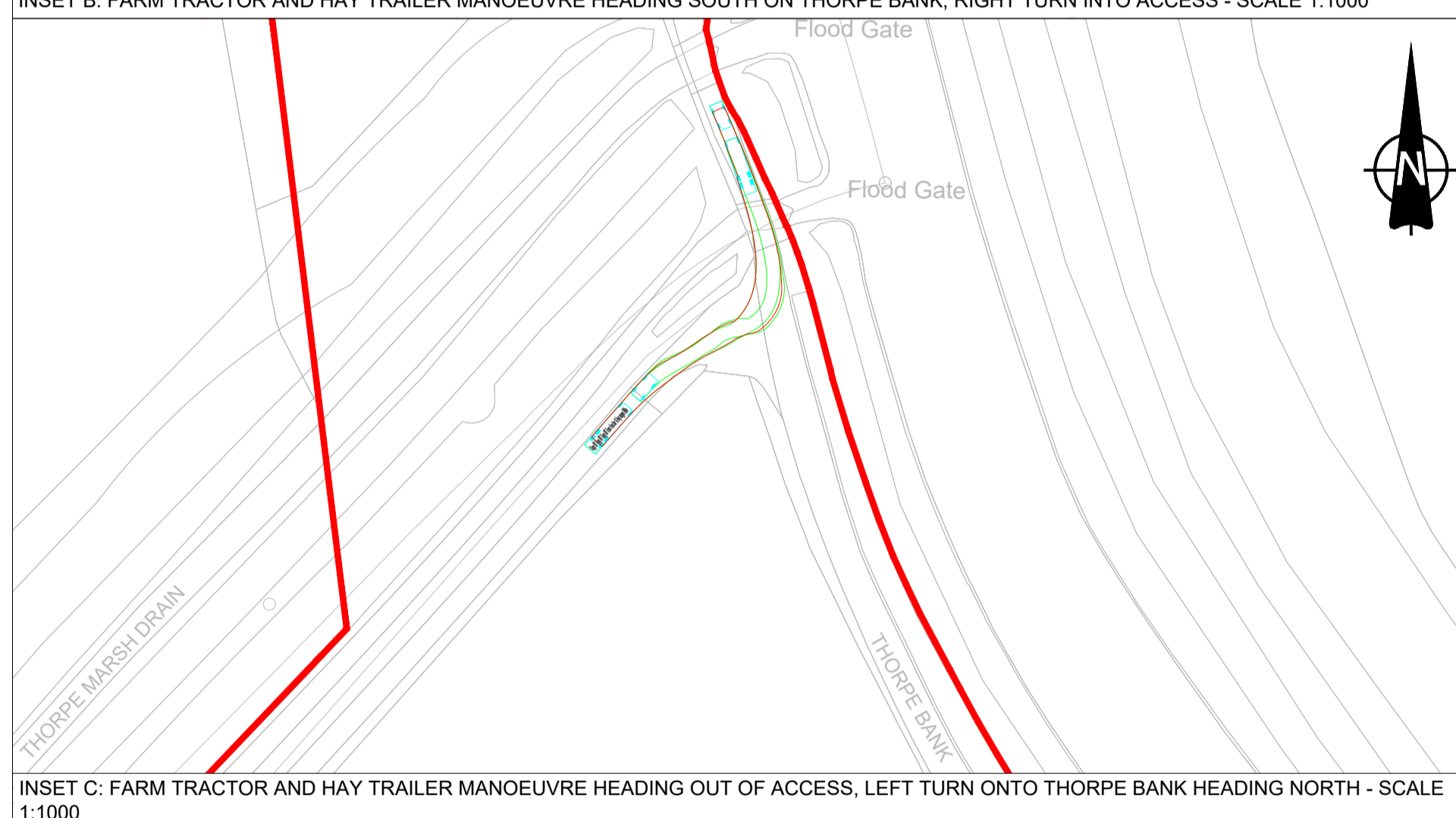
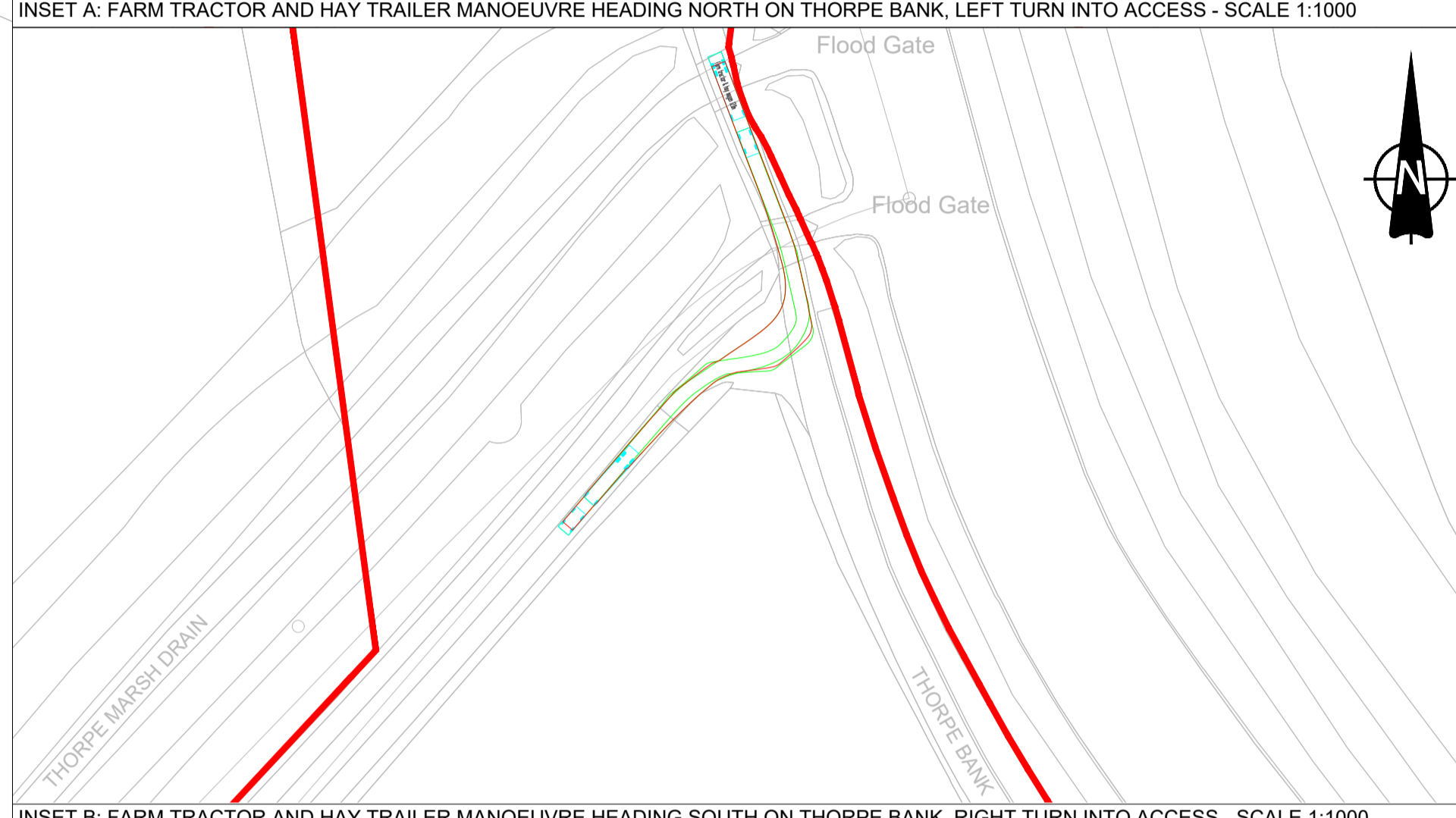
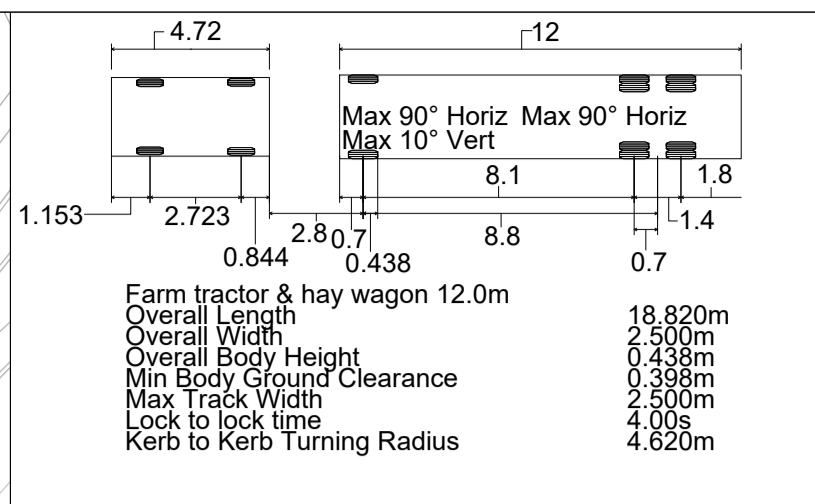
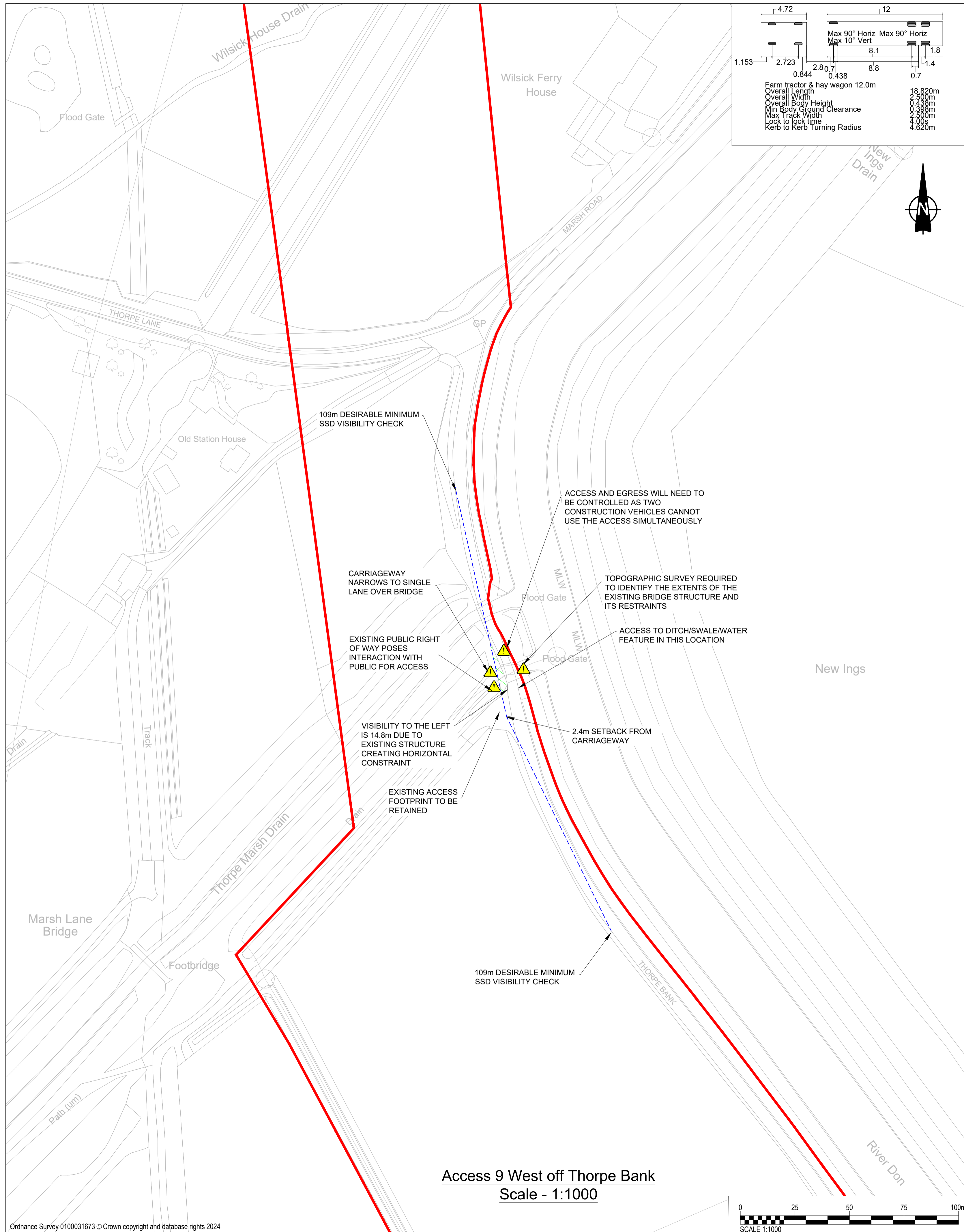
SHEET TITLE

ACCESS 8 SOUTH OFF MARSH ROAD
LAYOUT AND SWEEP PATH
ANALYSIS

SHEET NUMBER

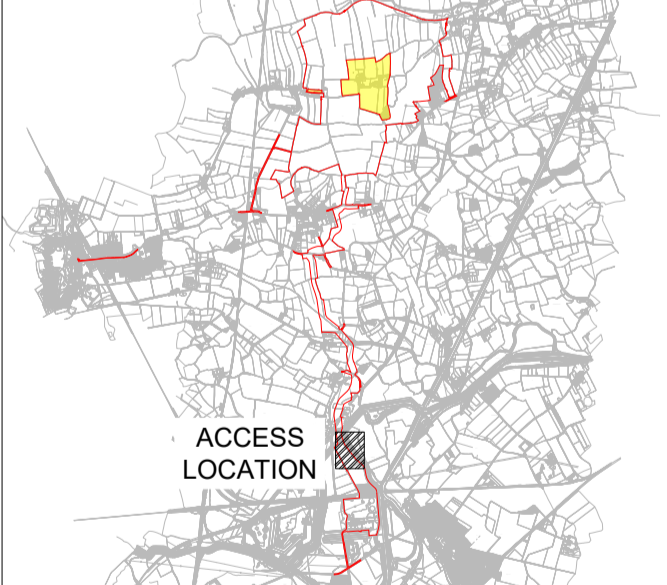
60698207-ACM-HGN-00-DR-CE-1008

This drawing has been prepared for the use of AECOM's client. It may not be used, modified, reproduced or relied upon by third parties, except as agreed by AECOM or as required by law. AECOM accepts no responsibility, and denies any liability whatsoever, to any party that uses or relies on this drawing without AECOM's express written consent. Do not scale this document.



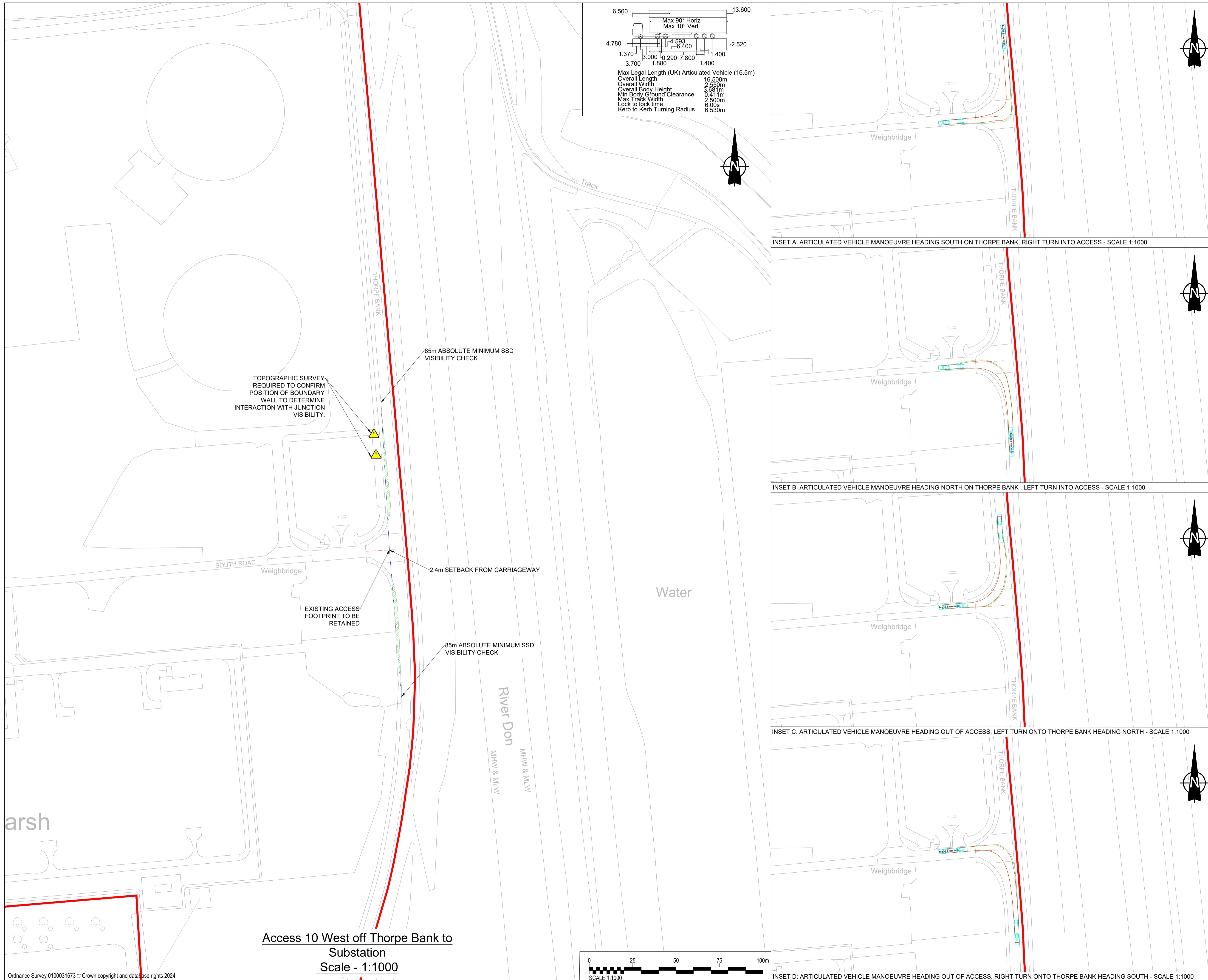
1. This drawing is to be read in conjunction with all other relevant documentation.
2. Do not scale from this drawing, use only printed dimensions.
3. All dimensions in meters, all chainages, levels and coordinates are in meters unless defined otherwise.
4. This Drawing is to be read in conjunction with the project health & Safety File for any identified potential risks.
5. Vegetation to be removed denotes any vegetation features (such as hedgerows) that need to be removed to provide the required junction visibility. Any verge grassland is not to be removed but managed by the relevant maintainer to a low height so as to not impact upon junction visibility.
6. Junction visibility for the access is based upon visibility parameters derived using 85th percentile speed survey received on the 20th March 2024.

- Extent of Access Footprint
- Order limits
- Existing Public Rights of Way
- Vehicle body
- Vehicle body path
- Vehicle load
- Vehicle load path
- Vehicle wheels path
- Edge of road
- Land not included in the Order Limits
- Junction Visibility
- Vegetation Management for Vis splay
- Hedgerow Removal for Vis Splay
- Hedgerow Removal for Bellmouth Access

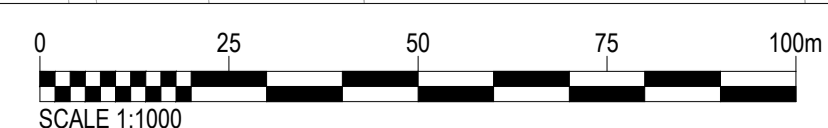


NO	DATE	DESCRIPTION
P03	04/12/2024	Update for PINS Comments
P02	11/10/2024	DCO Issue
P01	06/06/2024	FIRST VERSION
I/R	DATE	DESCRIPTION

This drawing has been prepared for the use of AECOM's client. It may not be used, modified, reproduced or relied upon by third parties, except as agreed by AECOM or as required by law. AECOM accepts no responsibility, and denies any liability whatsoever, to any party that uses or relies on this drawing without AECOM's express written consent. Do not scale this document.



Access 10 West off Thorpe Bank to Substation
 Scale - 1:1000



PROJECT

Fenwick Solar Farm

CLIENT

Fenwick Solar Project Limited

CONSULTANT

AECOM
 Saxon House, 27 Duke Street
 Chelmsford, Essex, CM1 1HT
 01245 771200 tel 01245 476121 fax
 www.aecom.com

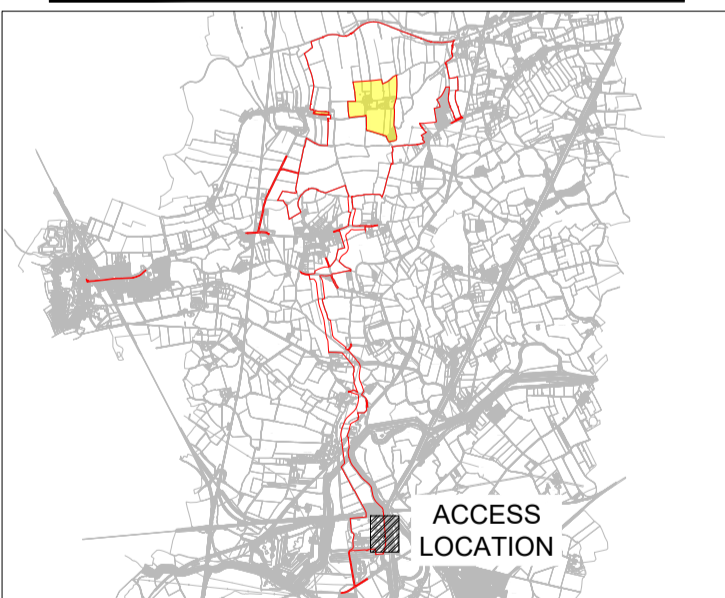
GENERAL NOTES

1. This drawing is to be read in conjunction with all other relevant documentation.
2. Do not scale from this drawing, use only printed dimensions.
3. All dimensions in meters, all chainages, levels and coordinates are in meters unless defined otherwise
4. This Drawing is to be read in conjunction with the project health & Safety File for any identified potential risks.
5. Vegetation to be removed denotes any vegetation features (such as hedgerows) that need to be removed to provide the required junction visibility. Any verge grassland is not to be removed but managed by the relevant maintainer to a low height so as to not impact upon junction visibility.
6. Junction visibility for the access is based upon visibility parameters derived using 85th percentile speed survey received on the 20th March 2024.

KEY

- Extent of Access Footprint
- Order limits
- Existing Public Rights of Way
- Vehicle body
- Vehicle body path
- Vehicle load
- Vehicle load path
- Vehicle wheels path
- Edge of road
- Land not included in the Order Limits
- Junction Visibility
- Vegetation Management for Vis splay
- Hedgerow Removal for Vis Splay
- Hedgerow Removal for Bellmouth Access

SHEET PLAN



ISSUE/REVISION

NO	DATE	DESCRIPTION
P03	04/12/2024	Update for PINS Comments
P02	11/10/2024	DCO Issue
P01	02/05/2024	FIRST VERSION
I/R	DATE	DESCRIPTION

PROJECT NUMBER

60698207

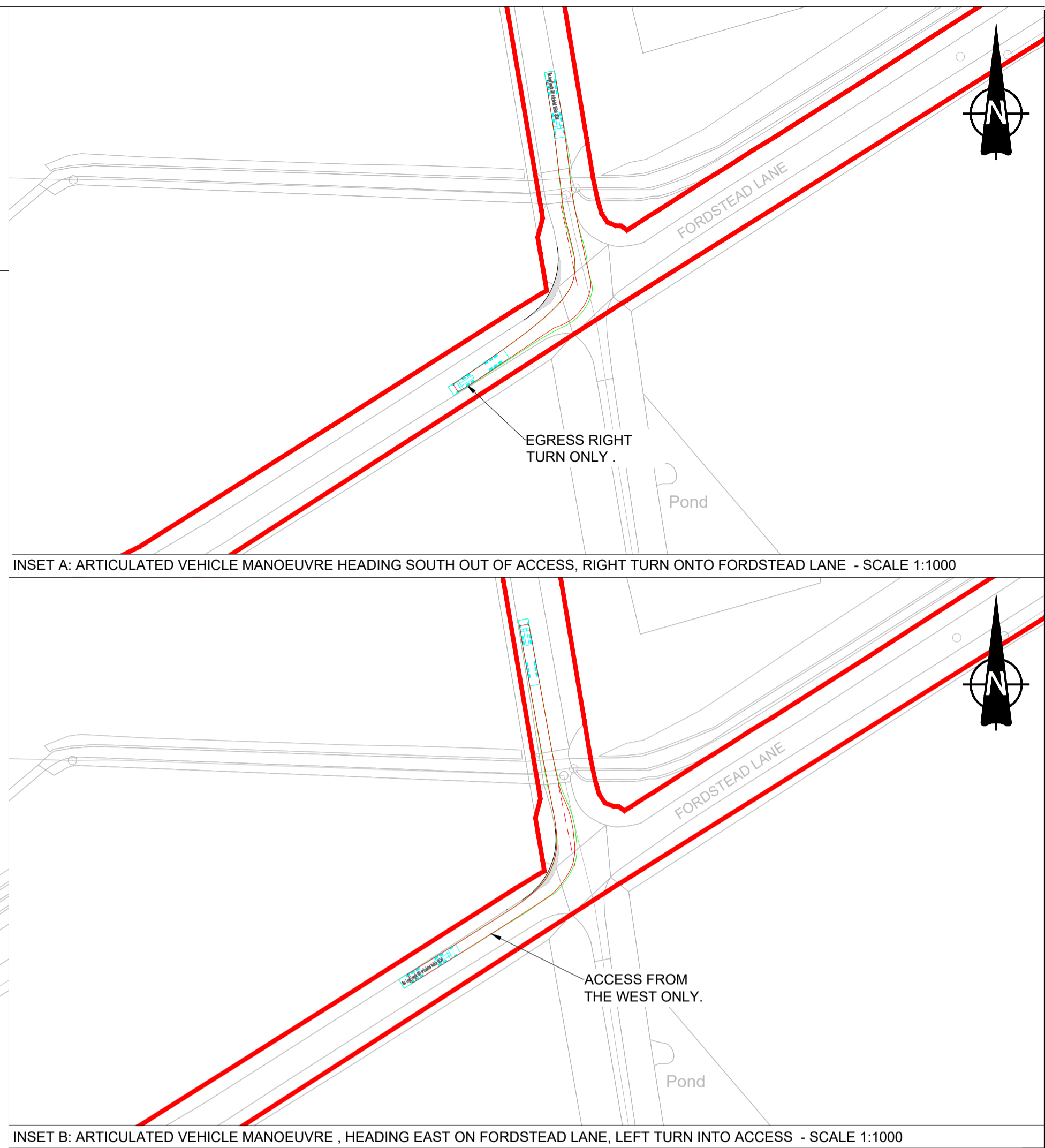
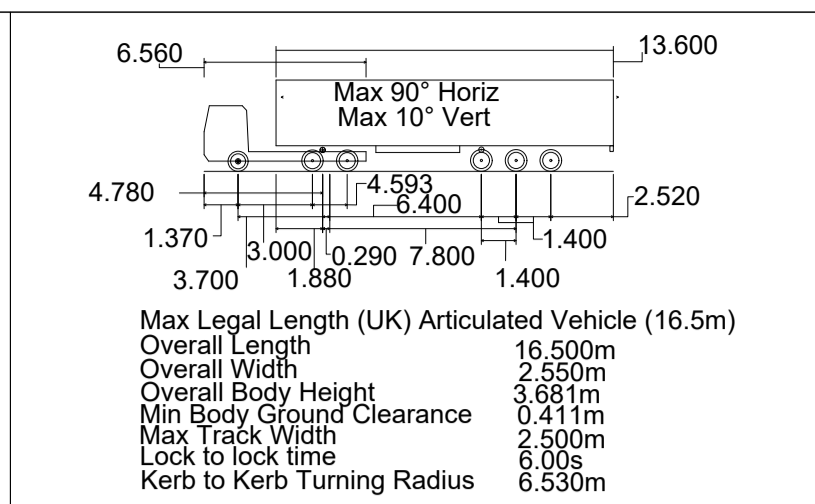
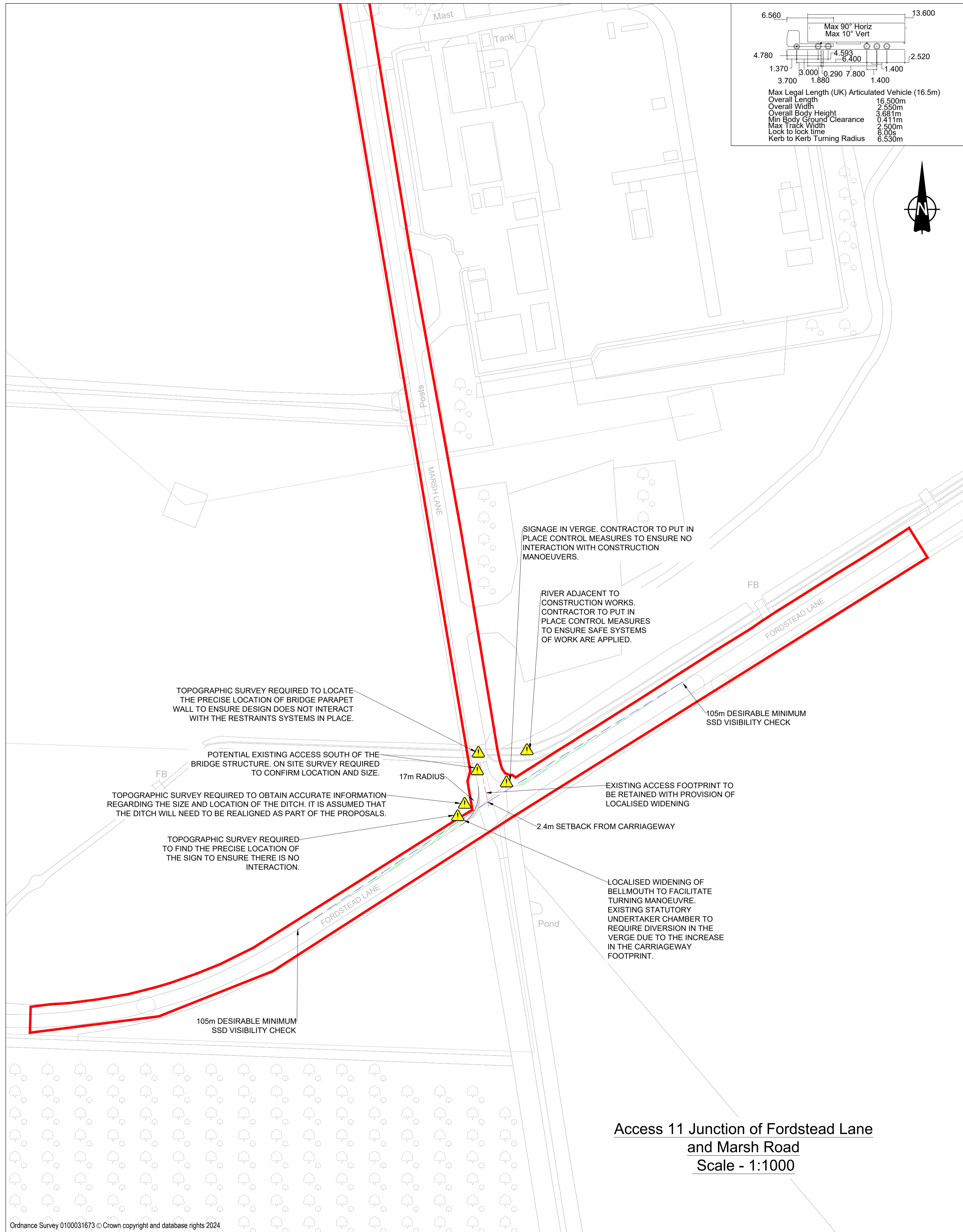
SHEET TITLE

ACCESS 10 WEST OFF THORPE BANK TO SUBSTATION LAYOUT AND SWEPT PATH ANALYSIS

SHEET NUMBER

60698207-ACM-HGN-00-DR-CE-1010

This drawing has been prepared for the use of AECOM's client. It may not be used, modified, reproduced or relied upon by third parties, except as agreed by AECOM or as required by law. AECOM accepts no responsibility, and denies any liability whatsoever, to any party that uses or relies on this drawing without AECOM's express written consent. Do not scale this document.



PROJECT

Fenwick Solar Farm

CLIENT

Fenwick Solar Project Limited

CONSULTANT

AECOM
Saxon House, 27 Duke Street
Chelmsford, Essex, CM1 1HT
01245 771200 tel 01245 476121 fax
www.aecom.com

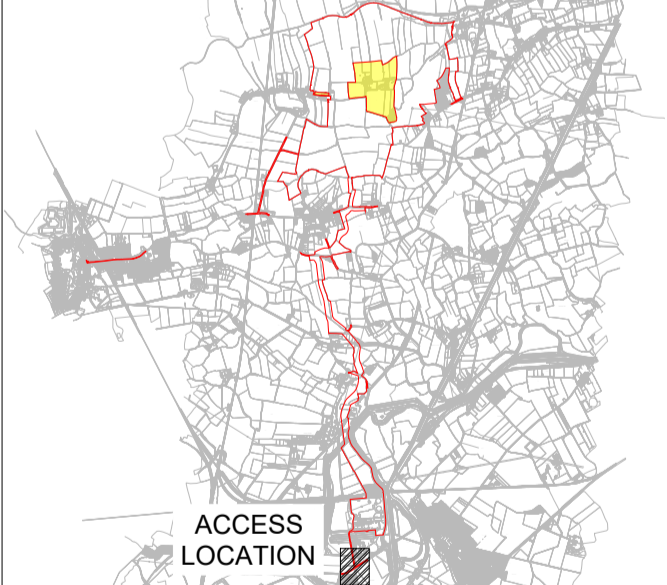
GENERAL NOTES

- This drawing is to be read in conjunction with all other relevant documentation.
- Do not scale from this drawing, use only printed dimensions.
- All dimensions in meters, all chainages, levels and coordinates are in meters unless defined otherwise.
- This Drawing is to be read in conjunction with the project health & Safety File for any identified potential risks.
- Vegetation to be removed denotes any vegetation features (such as hedgerows) that need to be removed to provide the required junction visibility. Any verge grassland is not to be removed but managed by the relevant maintainer to a low height so as to not impact upon junction visibility.
- Junction visibility for the access is based upon visibility parameters derived using 85th percentile speed survey received on the 20th March 2024.

KEY

- Extent of Access Footprint
- Order limits
- Existing Public Rights of Way
- Vehicle body
- Vehicle body path
- Vehicle load
- Vehicle load path
- Vehicle wheels path
- Edge of road
- Land not included in the Order Limits
- Junction Visibility
- Vegetation Management for Vis splay
- Hedgerow Removal for Vis Splay
- Hedgerow Removal for Bellmouth Access

SHEET PLAN



ISSUE/REVISION

NO	DATE	DESCRIPTION
P03	04/12/2024	Update for PINS Comments
P02	11/10/2024	DCO Issue
P01	02/05/2024	FIRST VERSION
I/R	DATE	DESCRIPTION

PROJECT NUMBER

60698207

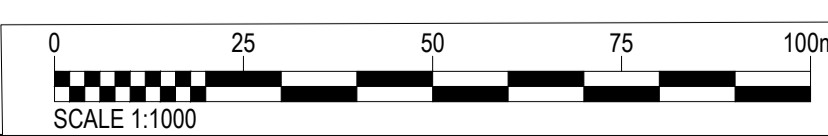
SHEET TITLE

ACCESS 11 JUNCTION OF FORDSTEAD LANE AND MARSH ROAD LAYOUT AND SWEEP PATH ANALYSIS

SHEET NUMBER

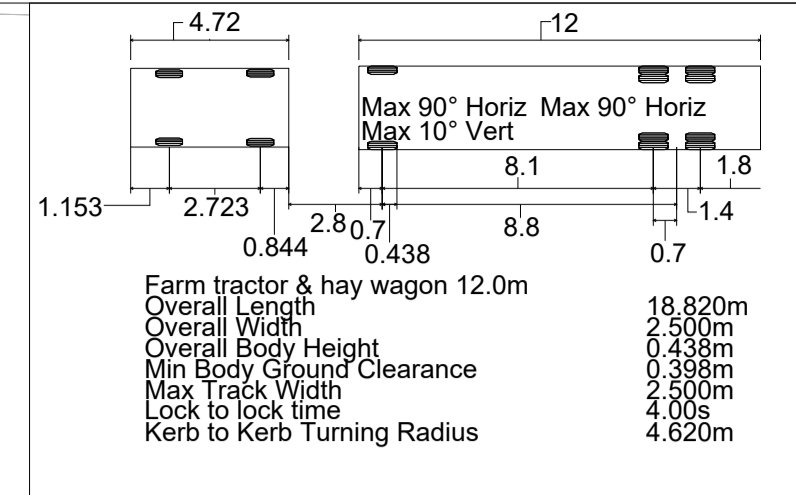
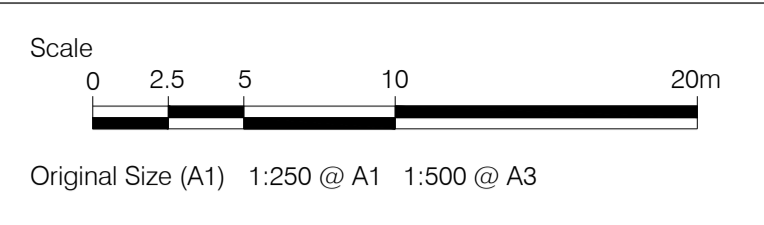
60698207-ACM-HGN-00-DR-CE-1011

**Access 11 Junction of Fordstead Lane and Marsh Road
Scale - 1:1000**



This drawing has been prepared for the use of AECOM's client. It may not be used, modified, reproduced or relied upon by third parties, except as agreed by AECOM or as required by law. AECOM accepts no responsibility, and denies any liability whatsoever, to any party that uses or relies on this drawing without AECOM's express written consent. Do not scale this document.

ISO A1 594mm x 841mm
 Approved: JCH
 Checked: MEK
 Designer: KP
 Project Management Initials:
 Lest saved by: KYLE PLACKETT(2024-12-05) Lest Printed: 2024-12-06
 Filename: C:\USERS\SKYLE\PLACKETT\AECOM\60698207\FENWICK SOLAR FARM - GENERAL\000_CAD_GIS\910_CAD\HIGHWAYS TEAM\DRAWINGS (CAD)\60698207-ACM-HGN-00-DR-CE-1012.DWG



Project
 Fenwick Solar Farm

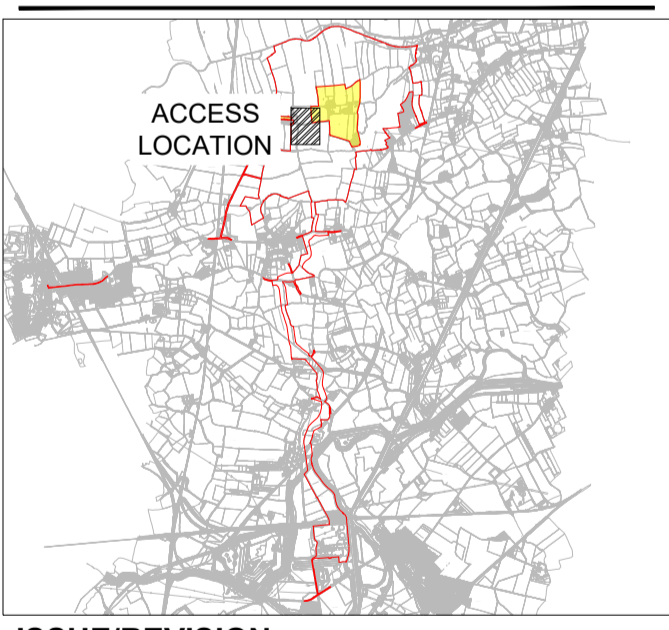
CLIENT
 Fenwick Solar Project Limited

CONSULTANT
 AECOM
 Saxon House, 27 Duke Street
 Chelmsford, Essex, CM1 1HT
 01245 771200 tel 01245 475121 fax
 www.aecom.com

- CONSULTANT**
1. This drawing is to be read in conjunction with all other relevant documentation.
 2. Do not scale from this drawing, use only printed dimensions.
 3. All dimensions in meters, all chainages, levels and coordinates are in meters unless defined otherwise.
 4. This Drawing is to be read in conjunction with the project health & Safety File for any identified potential risks.
 5. Access and egress for construction vehicles between access 12 and 13 to be controlled by traffic management measures to ensure access and egress movements do not interact with limited local traffic movements on Lawn Lane east of Fenwick.

- KEY**
- Extent of Access Footprint
 - Order Limits
 - Existing Public Rights of Way
 - Vehicle body
 - Vehicle body path
 - Vehicle load
 - Vehicle load path
 - Vehicle wheels path
 - Edge of road
 - Land not included in the Order Limits
 - Wall Removal for Bellmouth Access
 - Root protection area
 - Verge protection mats

SHEET PLAN



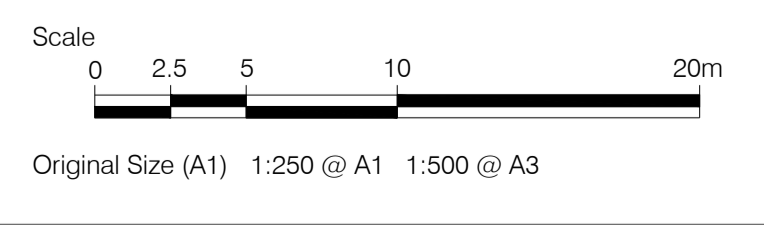
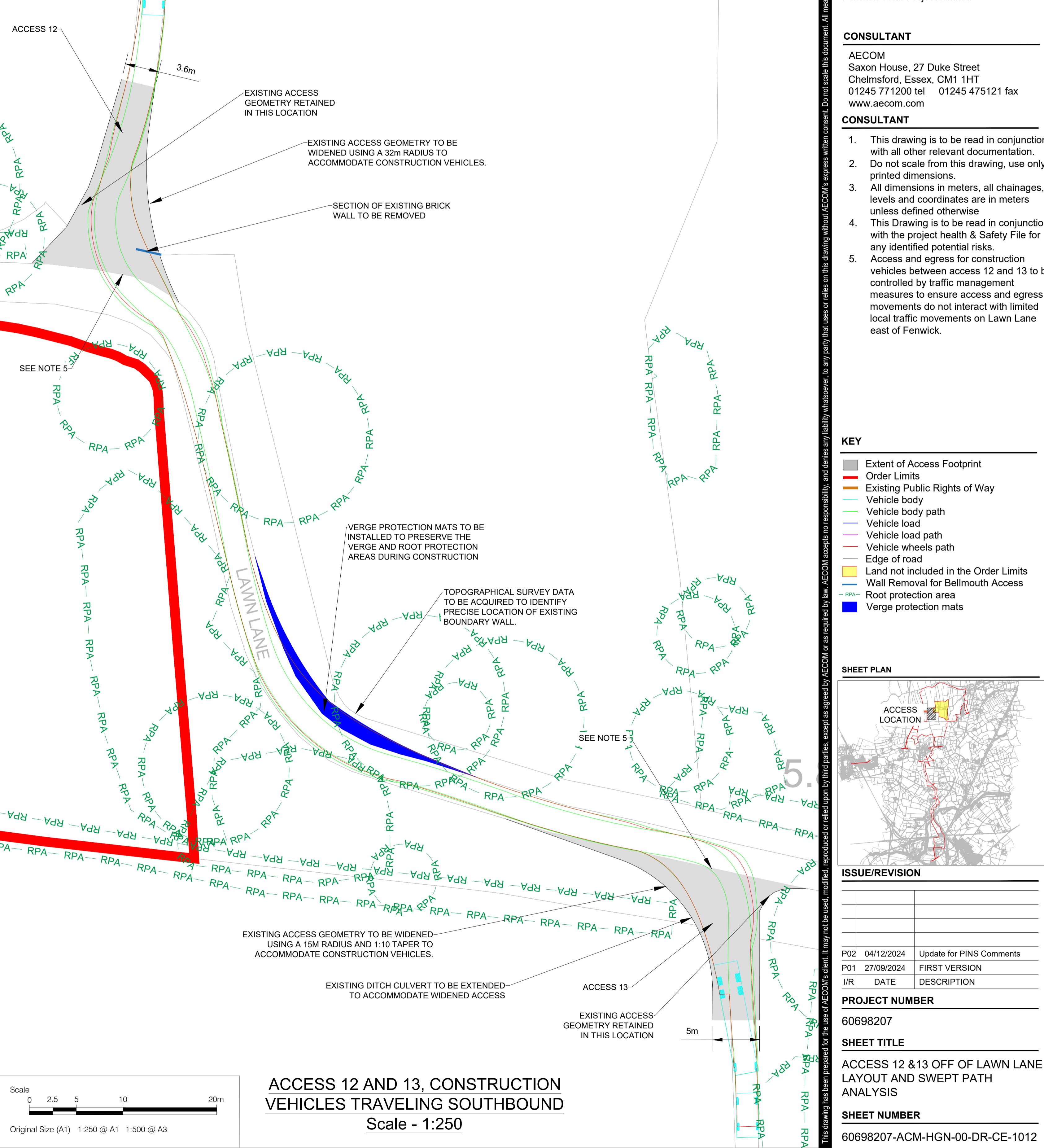
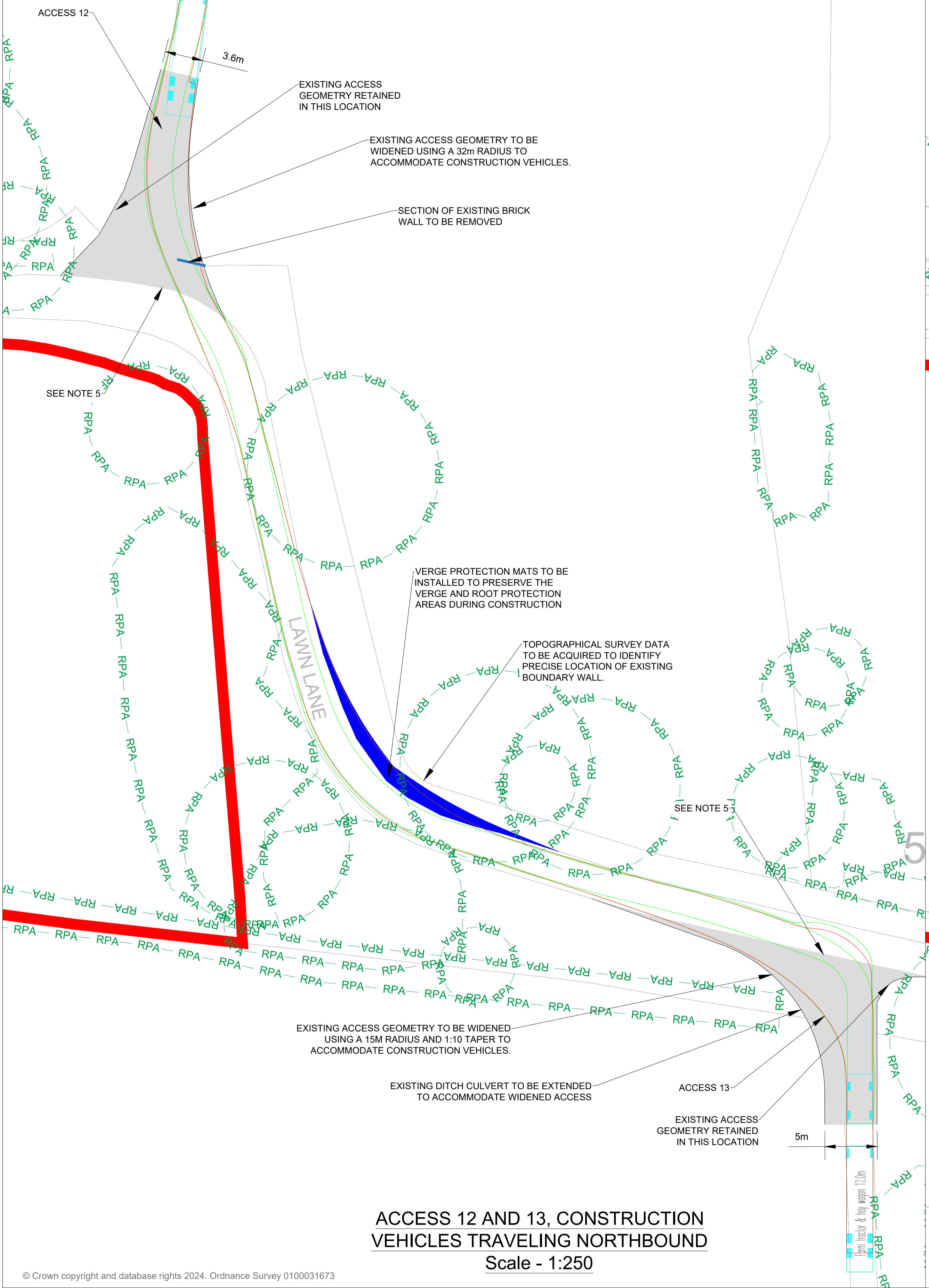
ISSUE/REVISION

NO	DATE	DESCRIPTION
P02	04/12/2024	Update for PINS Comments
P01	27/09/2024	FIRST VERSION
I/R	DATE	DESCRIPTION

PROJECT NUMBER
 60698207

SHEET TITLE
 ACCESS 12 & 13 OFF OF LAWN LANE LAYOUT AND SWEEP PATH ANALYSIS

SHEET NUMBER
 60698207-ACM-HGN-00-DR-CE-1012



This drawing has been prepared for the use of AECOM's client. It may not be used, modified, reproduced or relied upon by third parties, except as agreed by AECOM or as required by law. AECOM accepts no responsibility, and denies any liability whatsoever, to any party that uses or relies on this drawing without AECOM's express written consent. Do not scale this document. All measurements must be obtained from the stated dimensions.



BUILD | OWN | OPERATE | MAINTAIN

BOOM-POWER.CO.UK